



TT-Grundowinch

2 to 100 tonnes

Grundowinch Twin Capstan Winches offer unbeatable performance. Whatever capacity required or task performed. Grundowinch has re-written the specification rulebook with the user in mind.

Never before has such a comprehensive range of winches been available for today's increasingly active Trenchless Technology Industry. Faced with Swage Lining to Slip Lining, Roll Down to Sewer Renovation, Pipe Cracking to Pipe and Cable Pulling – Grundowinch pulls them all. "Hands free" operation is a hallmark of all Grundowinches, just set the required tonnage and line speed and let Grundowinch take the strain.

Any cable slack is immediately sensed and quickly taken up automatically.

Grundowinches are designed and built with both user and Plant Manager in mind; fully automatic and easy to use; tough, durable, reliable and simple to maintain. For Swage Lining and sensitive cable winching operations, optional electronic display dataloggers are available to constantly monitor line speed and winching force applied.

Data is stored on an internal SD which can be printed for reference purposes / statistical analysis.



www.TRACTO-TECHNIK.co.uk



Poly (Composite) Version



Standard Steel Version



Pulljack Version

COMPACT

Grundowinch 5 Tonne Model (see standard version picture). Dimensionally similar in size to its smaller sister winches, Grundowinch 2, 3 and 4 Tonne models. Due to their size, weight and single axle configuration, towing to and from site is safe and manoeuvrability is effortless.

Compact 3 tonne Pulljack twin capstan versions also available.

SILENT

The Grundowinch sound absorbing construction materials are standard on all models. Grundowinches are frequently used in built up residential areas and even when working at full load, noise levels are impressively low and well within EU regulations. This makes site communications so much easier when verbal trench to trench contact is required.

BESPOKE

Our standard range of Grundowinches spans from 2 to 40 tonnes. We can also build specialist Grundowinches in excess of 100 tonnes!



RW40 – 40 Tonne

All Grundowinches are fully enclosed in a robust, secure, steel casing providing:

- Total Safety – no exposed moving parts
- Low sound levels
- Security – the control panel and engine compartment are fully lockable
- Weather proofing
- On site durability
- Long life expectancy



Adjustable Height Towbar

TRANSPORT WITH EASE

Grundowinch's superb adjustable height tow bars (optional) ensure there is never a problem with transportation. Adjustment can be made in seconds without the need for any special tools. All winches are supplied with interchangeable ring eye and ball hitch to suit user requirements. Running gear and road lighting conforms, of course, to current EU regulations

CABLE STORAGE AND PROTECTION

Expensive cables are frequently in need of replacement through damage caused by excessive abrasive wear on winches which do not have cable layering/storage facilities.

Grundowinch leaves nothing to chance with its failsafe layering device which ensures accurate and consistent cable management and because all Grundowinches are twin capstan, there is no stress transferred to the cable drum or to the cable as it is layered. If for any reason the Grundowinch cable is damaged or requires replacement (after long service) this can be quickly carried out on site with little downtime.



CONTROLLABLE POWER

Increases required in tonnage (throughout the Grundowinch range) can be adjusted simply by movement of single easy access lever. *No disengagement of gears are initially required as with other types of winch.*

The required tonnage is set by the single lever and this "set load" is then verified by an independent fluid gauge giving absolute reliability.

High / low gearing is standard on all Grundowinches allowing variable line speeds depending on the tonnage required.



For operator safety, the winch control lever is positioned at the rear, thus when winching in the conventional position, the operator's view of the operation is not obscured.

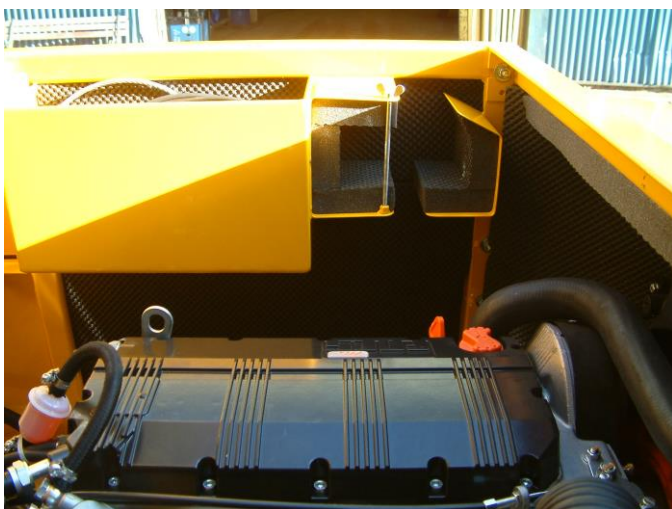
In cases of obstruction, where the operator requires greater control over winching, an optional remote control pendant is available providing ultimate winch-ability.

Pay-out of the winch cable is power assisted thereby allowing quick set up for fast winching operations.

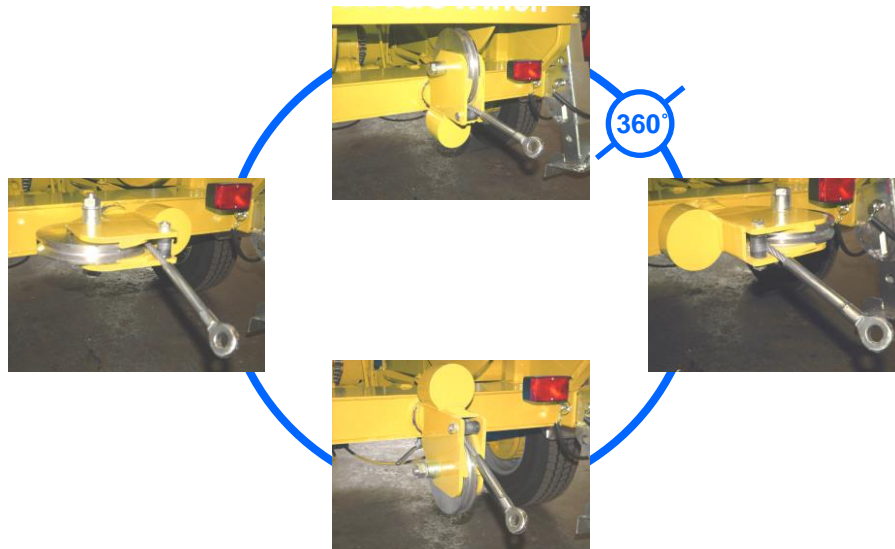
POWER TO PERFORM

The engines used to power the Grundowinch range are carefully selected for their low noise emissions, long-term proven reliability and consistent performance. Diesel engines from either Lombardini (3 or 4 cylinder) or Hatz (2, 3 or 4 cylinder) are fitted as standard. Petrol versions are also available in the smaller models as an option.

Access for servicing and maintenance is simplicity itself with all serviceable parts within easy reach and spare parts are available through a worldwide network of suppliers.



VARIABLE WINCHING POSITIONS



Grundowinches can be used for a variety of applications. With so many varied site conditions, the position of the winch is crucial to the success of the operation. Often winches can become damaged due to incorrect positioning resulting in an overload situation. Grundowinches are designed with just about every possibility in mind. A special 360° swivel pulley (fairlead) is incorporated at the rear of the chassis allowing variable off centre winching angles without compromising load percentage.

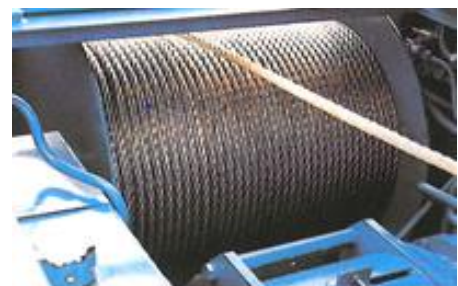
A further feature of Grundowinch is they are operated with the same degree of flexibility facing forwards or backwards to the winching exit trench.

SAFETY UNDER LOAD

With pulling forces from 2 to 40 tonnes, firm anchoring of the Grundowinch is catered for by specially designed, strengthened prop legs to the front and extendable, adjustable, angled legs with “cutting feet” to the rear – giving positive anchoring on the roughest ground, helping to control winch movement. Where site conditions allow, it is recommended the Grundowinch remains coupled to the towing vehicle during operation for increased stability. It is also recommended Grundowinch is secured with ropes, chains or lashing straps at the anchor points to avoid lateral movement or lifting of the towbar.

Fully adjustable easy clip on boom assemblies are available for the complete range of Grundowinches giving access down to 5 metres in depth to cover the majority of winching applications, with absolute safety in mind. Special length booms can be made to suit customers own requirements.

Stowaway wheel chocks are provided as standard with every Grundowinch to provide added stability and safety.

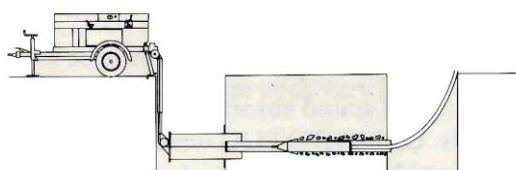


ENGINE MANAGEMENT SYSTEM

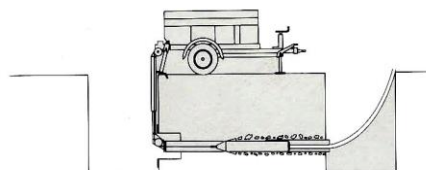
The very latest modular engine management control and warning system is fitted as standard to all Grundowinches, comprising low fuel warning light, clogged air filter indicator, battery charging and oil pressure light, high water temperature and diesel engine glow plug warning lights. All are an integral features of the engine management system, giving the onsite operator and plant fitters ongoing peace of mind.



One of the most popular uses for Grundowinch shown here in the conventional winching position.

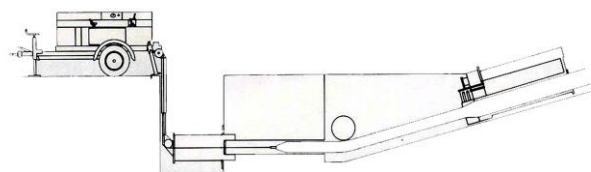


Same application, but in cases of site restrictions Grundowinch can still carry out its task working "back to front".



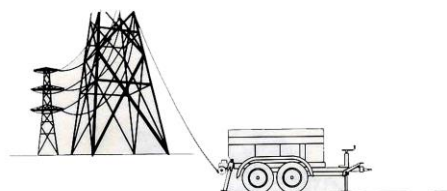
CLOSE FIT RELINING

Slip Lining, Swage lining and other close lining techniques are becoming increasingly popular in the Gas and Water industry. Grundowinch has the power to complete the largest of such operations.



CABLE PULLING

With Grundowinch capacities up to 40 tonne and beyond, cable pulling, whether underground or overhead, is simple and highly efficient.



Features and Benefits of GRUNDOWINCH

Twin Capstan Pulley System
Both capstans driven with two load-sharing hydraulic motors
Constant Tension on Winch Rope
Top-mounted (stay clean) automatic low tension Rope Layering onto Storage Drum
2 Stage Speed/ Tonnage Control
Fast Power Out of Winch Rope in Stage 2
Stepless Proportional Tonnage Control
High quality, flexible galvanized steel core 6 x 36 SC wire rope
Large Capacity Storage Drum
Self-adjusting Angle Rope Pulley at Rope Output with mounting for optional Winch Boom
Safe-start interlocked control lever switch
Emergency Stop Button on Winch and separate 5mtr remote control cable
Back winching possible in confined spaces
Horizontal Prop Leg Adjustment Tubes
Fully Adjustable Rear Prop Legs
Towbar has interchangeable Towing Eye and Ball Coupling
Optional fully adjustable Towbar height
Safety Wheel Chocks
EU Over-run braking system with auto reverse brake release
Fully Enclosed Bodywork allows for high level of Safe Operation
Lockable control panel cover for added site security
Lockable diesel fuel cap
Water cooled diesel engine reduces engine sound levels, low CO ² emissions
Engine management warning lights including oil, temperature, charging, air filter – cold start injector heaters
Lighting to UK Specification
Soundproof Bodywork to 74dBa
Digital in/out Rope Meter Counter - optional
Printer to record both tonnage and distance - optional
Pre-determined (automatic stop) set tonnage
Hydraulic Pressure Fluid Gauge with Pulling Force Indicator
Clear and foolproof instruments
Routine maintenance easily carried out
Paint Colour to Customers own Specification
Certificated Training by qualified product specialists
Quality Operators Manual & Parts List
12 months Warranty on non wearing parts
ISO 9002 Quality Certified
Legal Provision Directive – 98/37/EEC
National Standard Specification UVW-VBG 1
National Technical Specification UVW-VBG 8

Please note: Some of the above features are optional and are not standard on each Grundowinch.

ACCESSORIES



Datalogger & Printer



Line Pull Indicator



Digital Rope Metre Counter



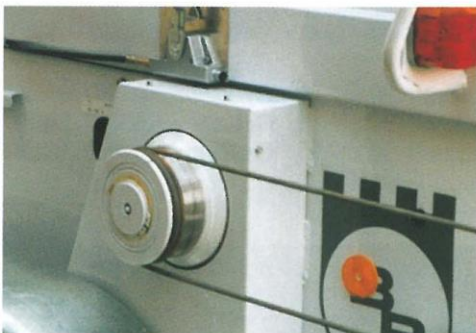
Rope Deflection Boom



Boom Holder



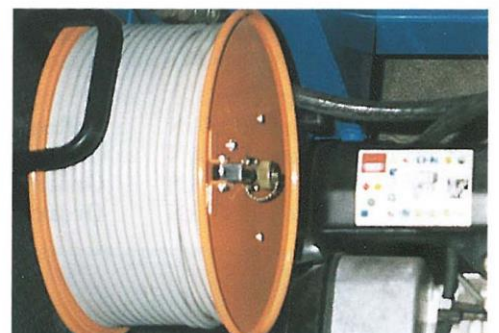
Oil Cooler



Side Capstan



Remote Control



Extension Cable for Remote Control



Self Propulsion System



Crawler / Track Mounted Option



Adjustable Height Towbar

CABLE AND PIPE LAYING ACCESSORIES



PE Pipe Coil Trailers



Pipe & Cable Pushers



Auxiliary rope winch



Hydraulic Lifting Jacks for Cable Drums



Universal manhole cover lifter



Cable Roller with ground plate



Cable pulling grips with 1 eyed thimble and pressed clamp open at one end



Cable pulling grips with 2 eyed thimbles and pressed clamps open at both ends



Cobra glass fibre rod spooled on galvanised wheeled cages

GRUNDOWINCH Specifications

(subject to change without notice)

Model	KW 2002	KW 2000	KW 3000	KW 4000	KW 5000	KW 5010	KW10
Item Description	Pipe/Cable Pulling	Pipe/Cable Pulling	Pipe/Cable Pulling	Pipe/Cable Pulling	Pipe/Cable Pulling	Pipe/Cable Pulling	Pipe/Cable Pulling
Engine Type	Petrol	Diesel	Diesel	Diesel	Diesel	Diesel	Diesel
Engine Power KW	12	15	15	15	20	20	24
Max Line Pull tonnes	2	2	3	4	5	5	10
Tonnage Measuring Device	Clock w. limit switch	Clock w. limit switch	Clock w. limit switch	Clock w. limit switch	Clock w. limit switch	Clock w. limit switch	Clock w. limit switch
Max Line Speed m/min	70	70	50	50	40	40	30
Useful Rope Length mtrs	200-500*	200-1550*	200-1000*	200-850*	200-650*	1000	200-700*
Rope diameter mm	8	8	10	11	12	12	16
Trailer axle/s number	1	1	1	1	1	2	2
Height adjustable towbar	N. AV	N.AV.	N.AV	Option	Option	Standard	Standard
Remote Ctrl, Emrgcy Stop	Standard	Standard	Standard	Standard	Standard	Standard	Standard
Approx. Weight ≈ KG	1150	1250	1350	1500	1550	2600	2850

Model	RW 2000	RW 3000	RW 4000	RW 5000	RW 10	RW 20	RW 40
Item Description	Cable/Pipe/ Pipe Cracking	Cable/Pipe/ Pipe Cracking	Cable/Pipe/ Pipe Cracking	Cable/Pipe/ Pipe Cracking	Cable/Pipe/ Pipe Cracking	Cable/Pipe/ Pipe Cracking	Cable/Pipe/ Pipe Cracking
Engine Type	Diesel	Diesel	Diesel	Diesel	Diesel	Diesel	Diesel
Engine Power KW	10.5	15	15	20	20	36	74
Max Line Pull tonnes	2	3	4	5	10	20	40
Tonnage Measuring Device	Gauge	Gauge	Gauge	Gauge	Gauge	Gauge	Gauge
Max Line Speed m/min	60	40	40	30	15	17	25
Useful Rope Length mtrs	200-1000*	200-400*	200-850*	200-650*	200-700*	300-1200	800
Rope diameter mm	10	10	11	12	16	22	32
Trailer axle/s number	1	1	1	1	2	2	2
Height adjustable towbar	Option	Option	Option	Option	Standard	Standard	Standard
Approx. Weight ≈ KG	1150	1200	1400	1450	2950	5000	16000

Model	RKW 3000	RKW 4000	RKW 4010	RKW 5000	RKW 5010	RKW 10	RKW 10
Item Description	Cable Pulling/Pipe Cracking	Cable Pulling/Pipe Cracking	Cable Pulling/Pipe Cracking	Cable Pulling/Pipe Cracking	Cable Pulling/Pipe Cracking	Cable Pulling/Pipe Cracking	Cable Pulling/Pipe Cracking
Engine Type	Diesel	Diesel	Diesel	Diesel	Diesel	Diesel	Diesel
Engine Power KW	20	20	20	20	20	20	20
Max Line Pull tonnes	3	4	4	5	5	10	10
Tonnage Measuring Device	Clock w. limit switch	Clock w. limit switch	Clock w. limit switch	Clock w. limit switch	Clock w. limit switch	Clock w. limit switch	Clock w. limit switch
Max Line Speed m/min	40	40	40	30	30	15	15
Useful Rope Length mtrs	200-1000*	200-850*	1000	200-650*	1000	1000	200-700*
Rope diameter mm	10	11	11	12	12	14	16
Trailer axle/s number	1	2	2	2	2	2	2
Height adjustable towbar	Option	Standard	Standard	Standard	Standard	Standard	Standard
Remote Control, Fwd, Stop, Back w. 10mtr cable	Standard	Standard	Standard	Standard	Standard	Standard	Standard
Approx. Weight ≈ KG	1400	1500	2150	1650	2300	3200	2500

Other **GRUNDOWINCH** models and versions are available to suit your specific requirements

All **GRUNDOWINCHES** can be fitted with a Datalogger/Printer in place of Measuring Clock.

* **GRUNDOWINCHES** fitted with 300mtrs or more rope length require the addition of the Cross Groove Spindle Layering Device

** (RAL) Paint Colour to customers choice

Optional Accessories: Rope Metre Counter : Winching Boom : Holder for Boom : Datalogger Printer : Anti-twist Swivels : Groove Spindle Layering Device, see note * above : Remote Control, Forward, Stop, Backward with 10mtr Cable. (Specifications will vary according to accessories added)



TRACTO-TECHNIK

worldwide



Germany
TRACTO-TECHNIK GmbH & Co. KG
TT Headquarters
 Paul-Schmidt-Straße 2
 57368 Lennestadt · Germany
 Tel: +49 2723 808-0 · Fax: -180
 export@tracto-technik.de
 www.TRACTO-TECHNIK.com

Switzerland
TRACTO-TECHNIK
Schweiz AG
 Tel: +41 79 8203897
 info@tracto-technik.ch
 www.TRACTO-TECHNIK.ch

USA
TT TECHNOLOGIES Inc.
 Tel: +1 630 851 8200
 Fax: +1 630 851 8299
 info@tttechnologies.com
 www.TTTECHNOLOGIES.com

United Kingdom
TRACTO-TECHNIK UK LTD
 Tel: +44 (0)1234 342566
 Fax: +44 (0)1234352184
 info@tt-uk.com
 www.TRACTO-TECHNIK.co.uk

Australia
TT ASIA PACIFIC Pty Ltd.
 Tel: +61 734205455
 Fax: +61 734205855
 info@tt-asiapacific.com
 www.TT-ASIAPACIFIC.com

France
TRACTO-TECHNIK France
 Tél: +33 5 53538983
 Fax: +33 5 53093941
 info@tracto-technik.fr
 www.TRACTO-TECHNIK.fr

Marocco
TRACTO-TECHNIK Afrique
 Tel.: +212 53740 13 63 / 64
 Fax: +212 53740 13 65
 info@tracto-technik.ma
 www.TRACTO-TECHNIK.ma

Presented by your TT partner:

INSPIRING TRENCHLESS TECHNOLOGIES

