

**NEW****GRUNDODRILL<sup>18ACS</sup>****Now possible with cable guided (wire line) detection system**

Whenever walk-over systems encounter their maximum operating limits, or if it's impossible to use (for example), under railway lines, then cable guided (wire-line) detection for the pilot bore is now an option.

The cable-guided tracking method is now available for the GRUNDODRILL18ACS rock drill rigs with the Elicon twin-tube rods. The cable-guided sonde system is supplied separately.



Fig. 1 Rock drilling

Inside the bore head (rock drilling device called rockbreaker), the cable is linked with the slip ring of the sonde. It is then guided through the inner rod of the twin-tube rod. On the Grundodrill rig the cable emerges from the bentonite duct and is connected to the brass coloured slip ring (fig. 4). The data is then transferred to the touch screen display inside the operator's cabin of the Grundodrill rig.

**Application of Cable-Guided Drilling**

- for deep drilling
- for undercrossing water bodies
- for crossing beneath railway tracks
- for tracking in areas with interferences

**TRACTO-TECHNIK GmbH & Co. KG**

PO Box 4020

57368 Lennestadt · Germany

Tel.: +49 2723 808-0

[www.TRACTO-TECHNIK.com](http://www.TRACTO-TECHNIK.com)

Your contact for technical issues:

Rene Schrinner, Tel.: +49 171 4707380



Fig. 2 Assembling the cable-guide

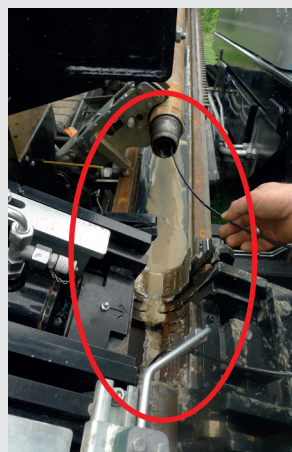


Fig. 3 Cable in the inner rods

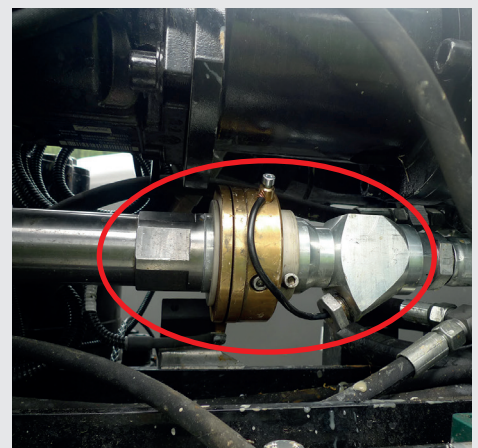


Fig. 4 Cable connection with the slip ring